

Bryozoa (encrusting) - *Watersipora subtorquata*

DESCRIPTION	This encrusting bryozoan is sheet-like to erect and the zooids are bright orange outlined in black with black opercula clearly visible to the naked eye.
RANGE	From Baja California to Coos Bay, Oregon. First record on the west coast in Cabo San Lucas, Mexico in 1937 based on collecting in 1888. Considered an Atlantic and Caribbean species, it is now invasive worldwide.
SIZE	Zooids with slight mid expansion, but basically rectangular, alternating and regularly spaced. Can form large, upright, chip-like growths that form colonies up to 25 cm tall
STATUS	Invasive
COLOR	bright orange with black opercula, zooids outlined in black.
HABITAT	Often found on docks and man made structures including aquaculture infrastructure. Its resistance to copper based paints allows it to colonize boat hulls and provide substrate for other invading species.
TIDAL HEIGHT	lower intertidal to subtidal
SALINITY	20-50 ppt
TEMPERATURE	12 - 28 C
SIMILAR SPECIES	<i>Schizoporella japonica</i> , another invasives species in Alaska, and <i>Tegella aquilirostris</i> (native) are also orange and look very similar at first glance, but neither of these species has the black opercula or black outline around each zooid. There are 2 other <i>Watersipora</i> species that may be confused with it, <i>Watersipora arcuata</i> (opercula has a distinctive arch proximally) and <i>Watersipora edmonsoni</i> (has a much narrower, longer opercular sinus).



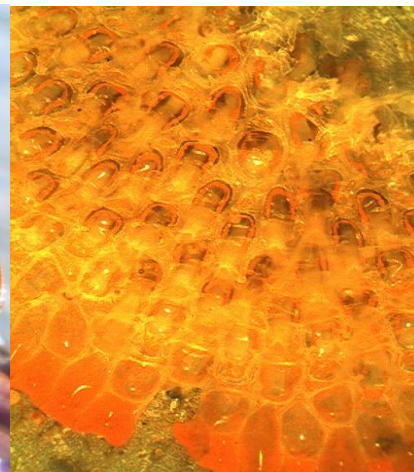
© Melissa Frey



©SERC



©Melissa Frey



©Linda McCann *Tegella aquilirostris*