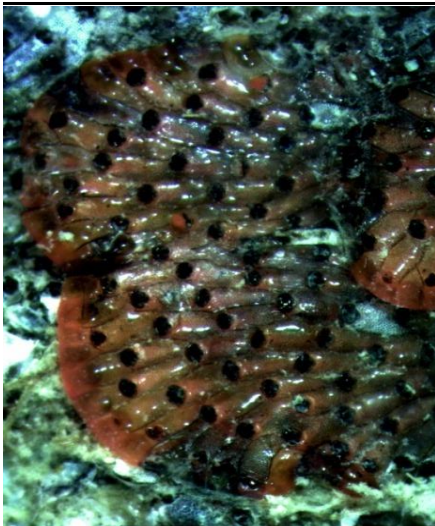
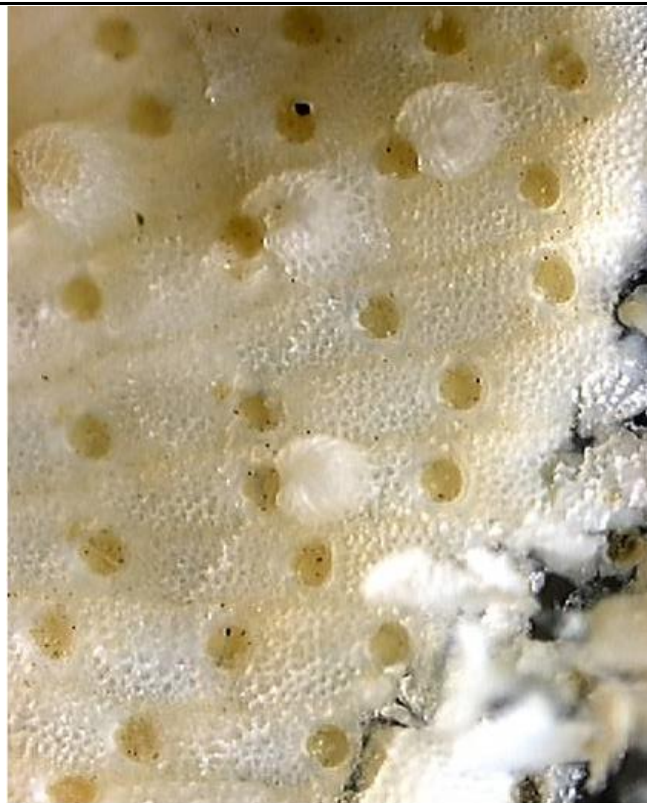


## Bryozoa (encrusting) - *Schizoporella japonica*

<b>DESCRIPTION</b>	This encrusting bryozoan is sheet-like and the zooids are pale to bright orange, with ridged and porous ovicells.
<b>RANGE</b>	From San Diego, California to Alaska. Common all along the west coast. Originally from Japan, It was recorded in British Columbia as early as 1970.
<b>SIZE</b>	Zooids basically rectangular, more rounded distally, zooids alternating and regularly spaced.
<b>STATUS</b>	Invasive
<b>COLOR</b>	pale to bright orange.
<b>HABITAT</b>	Often found on panels, but also common on natural substrates.
<b>TIDAL HEIGHT</b>	lower intertidal to subtidal
<b>SALINITY</b>	
<b>TEMPERATURE</b>	
<b>SIMILAR SPECIES</b>	<i>Watersipora subtorquata</i> (first photo) is also orange and looks similar at first glance, but the black opercula or black outline around each zooid distinguishes it from <i>Schizoporella</i> .



© Melissa Frey *W. subtorquata*



©Linda McCann *Schizoporella japonica*