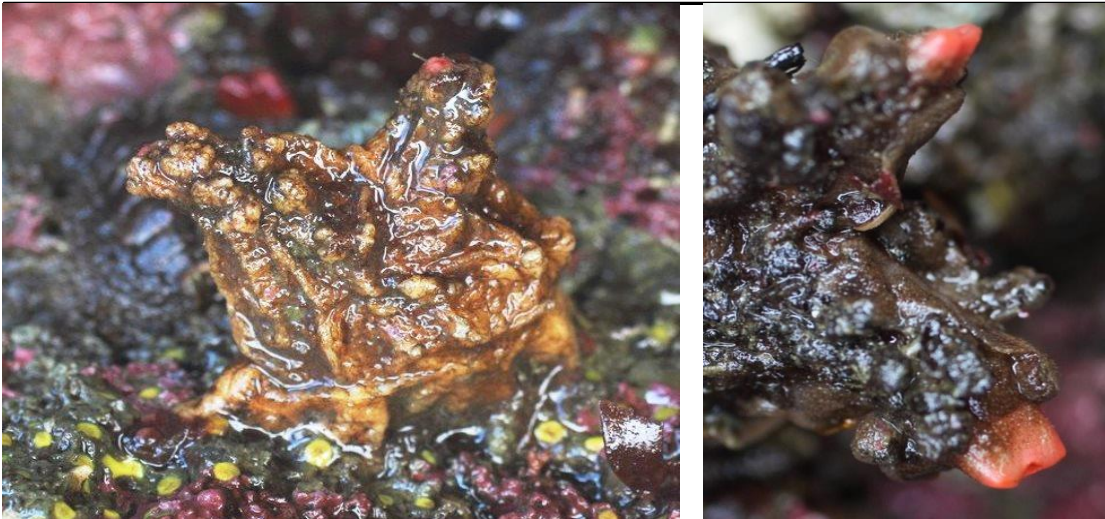


Tunicate (solitary) - *Pyura haustor*

DESCRIPTION	Solitary tunicate roughly globular. Brown or reddish tunic tough, thick and wrinkled. Siphons half total height of body with red siphon tips. Broad attachment, no stalk. No spines on the tunic.
RANGE	Alaska to California
SIZE	Up to 5 cm tall and 3.5 cm wide
STATUS	Native
COLOR	Brown to reddish. Can be covered with encrusting organisms. Siphons bright red but can be retracted making the tunicate much harder to see.
HABITAT	Rocky habitats and cryptic crevices. Among kelp holdfasts.
TIDAL HEIGHT	Low intertidal to 200 m.
SALINITY	15.2 to 33.3 ppt. (Homer & Seldovia harbor range)
TEMPERATURE	neg 2.3 to 14.°9 C (Homer & Seldovia harbor range)
SIMILAR SPECIES	Nothing similar in Alaska.



©E.Mckettrick-Ground Truth Trekking