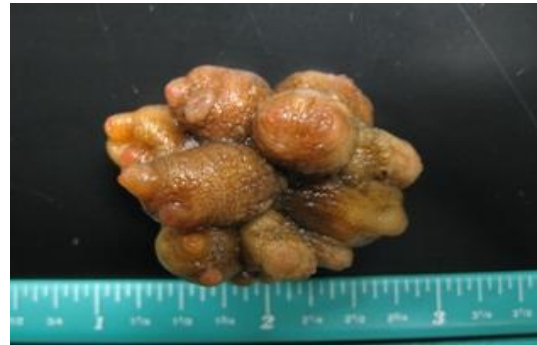


Tunicate (solitary) - *Dendrodoa pulchella*

DESCRIPTION	Solitary tunicate but grows together in clumps. Tunicate globular, tough and wrinkled. Siphons can be pale red or pink in contrast to the rest of the tunicate.
RANGE	Circumpolar Arctic species, in the Pacific from Kamchatka to the Bering Strait. In Alaska, found in Nunivak Island and Kachemak Bay
SIZE	To 2.5 cm in diameter.
STATUS	Native
COLOR	Grey, orange to pinkish.
HABITAT	Muddy sand. In Kachemak Bay seen washed up on beach after storms and on lines in harbors.
TIDAL HEIGHT	Subtidal to 100m.
SALINITY	25.4 to 33.3 ppt. (Homer & Seldovia Harbor deep sonde range)
TEMPERATURE	-0.4 to 12.4 °C (Homer & Seldovia Harbor deep sonde range)
SIMILAR SPECIES	Distinguished from other species of the genus by the numerous oral tentacles (only visible in water) and the 3 branched gonad (requires dissection).



©ADF&G - KBRR



©ADF&G - KBRR

Photos from Kachemak Bay, AK