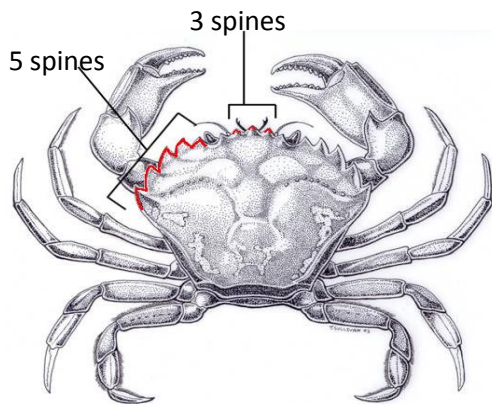


## European Green Crab - *Carcinus maenas*

<b>DESCRIPTION</b>	Pagurid marine crab with 5 spines on each side of the eye stalk and 3 between.
<b>RANGE</b>	San Diego, CA to British Columbia. Native to Europe, they are now as far north as the northern end of Vancouver Island in BC.
<b>SIZE</b>	A small species, adults up to 10 cm across carapace.
<b>STATUS</b>	Invasive
<b>COLOR</b>	mottled greens and browns, older specimens becoming very orange, especially on the ventral side
<b>HABITAT</b>	rocky shores, cobble beaches, sand flats, eel grass beds and salt marshes.
<b>TIDAL HEIGHT</b>	low intertidal to about 6 m
<b>SALINITY</b>	6-35 ppt, estuarine and marine
<b>TEMPERATURE</b>	tolerant of a broad range of temperatures from below freezing to 35°C, though larvae do not survive below 10°C
<b>SIMILAR SPECIES</b>	Other similar crabs include Dungeness ( <i>Metacarcinus magister</i> ) and the Red Rock Crab ( <i>Cancer productus</i> ), but they have 10 spines on each side and can be much larger, Pygmy Cancer crabs ( <i>Cancer oregonensis</i> ), which have black tipped claws and a more circular shell, and the Helmet or horse crab ( <i>Telmessus cheiragonus</i> ) which has large spines on the edge of it's more round carapace and is covered with stiff hairs.



©ADFG



©Lina Ceballos



© Janna Nichols Dungeness crab



Red Rock crab  
©[www.wallawalla.edu/academics/departments/biology/rosario/inverts](http://www.wallawalla.edu/academics/departments/biology/rosario/inverts)