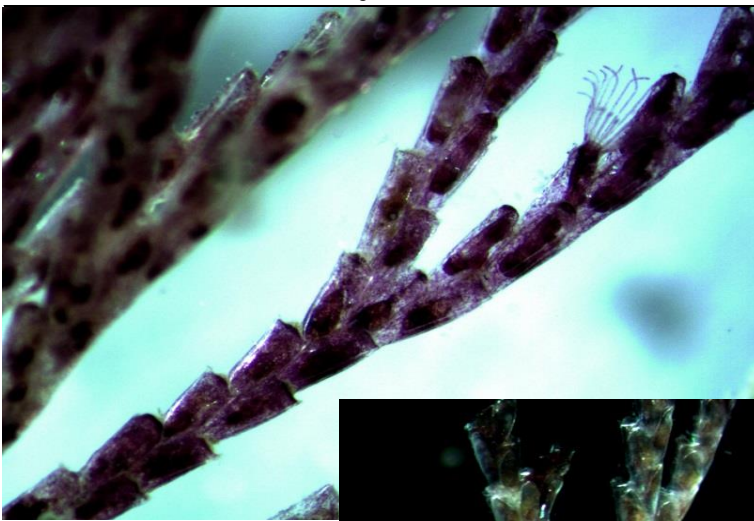
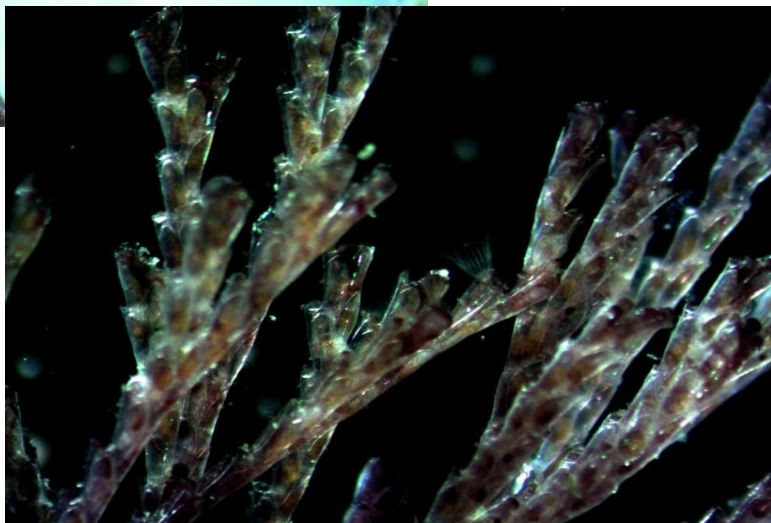


## Bryozoa (encrusting) - *Bugula neritina*

<b>DESCRIPTION</b>	This upright branching bryozoan can be distinguished from the west coast Bugula species by it's dark purple/maroon color
<b>RANGE</b>	First reported on the west coast in Baja, California in 1905, it is now abundant up and down the west coast and was recently found in Ketchikan, Alaska. A species complex found around the world, it's origin is unclear.
<b>SIZE</b>	Zooids have pointed corners, but without spines, ovicells large and globular, no avicularia (birds heads)
<b>STATUS</b>	Invasive/Cryptogenic
<b>COLOR</b>	dark purple, maroon to brick red colored, sometimes pale
<b>HABITAT</b>	Very common on docks and man made structures but also abundant on natural substrates
<b>TIDAL HEIGHT</b>	lower intertidal to subtidal with a deeper water morphotype
<b>SALINITY</b>	14-50 ppt
<b>TEMPERATURE</b>	12 - 30 C
<b>SIMILAR SPECIES</b>	There are several other 'red' Bugulas, but not that currently occur on the US west coast. All the other Bugula's have avicularia, making this species easy to distinguish.



©Melissa Frey



©Melissa Frey *Bugula neritina*