

## Tunicate (colonial) - *Botryllus schlosseri*

<b>DESCRIPTION</b>	The zooids in this colonial tunicate are organized in a star pattern (usually conspicuous). Colonies are flat, but can develop lobes as they mature.
<b>RANGE</b>	Alaska to California. First noted in California and Washington in the 1970's. Native to Europe, and the Mediterranean. Now abundant in Sitka and recently found at one locality in Ketchikan but no clear evidence of establishment yet.
<b>SIZE</b>	Forms flat irregular sheets 3-4 mm thick, and up to around 15 cm.
<b>STATUS</b>	Invasive, see the complete record at <a href="http://invasions.si.edu/nemesis/">http://invasions.si.edu/nemesis/</a>
<b>COLOR</b>	Often two-toned, the color patterns are extremely variable, white, purple, orange or brown to almost black.
<b>HABITAT</b>	Docks, boat hulls, buoys, ropes, pilings, on top of and underneath rocks, on mussels and solitary sea squirts, seaweeds and eelgrass.
<b>TIDAL HEIGHT</b>	Subtidal to 200 m, occasionally found in lower intertidal
<b>SALINITY</b>	<14-44 ppt. Found in marine and estuarine habitats.
<b>TEMPERATURE</b>	Species dies below 3°C and needs at least 11°C to reproduce
<b>SIMILAR SPECIES</b>	<i>Botrylloides</i> has long rows of zooids, numerous large vascular ampulae along the exterior margins of the colony (present in <i>B. schlosseri</i> but fewer in number), and much larger brooded larvae.



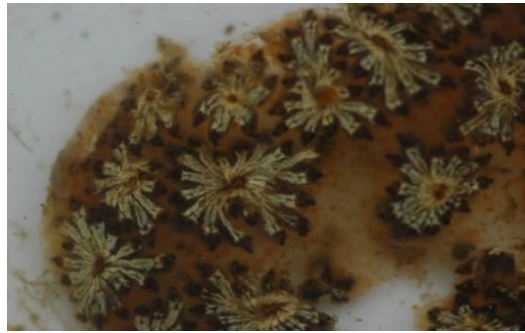
©H. Meuret-Woody



©SERC/RTC



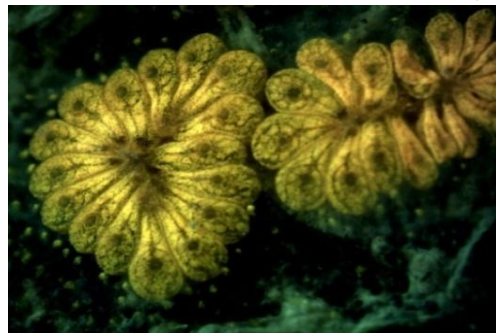
©SERC/RTC



©SERC/RTC



©M Frey



©M. Frey