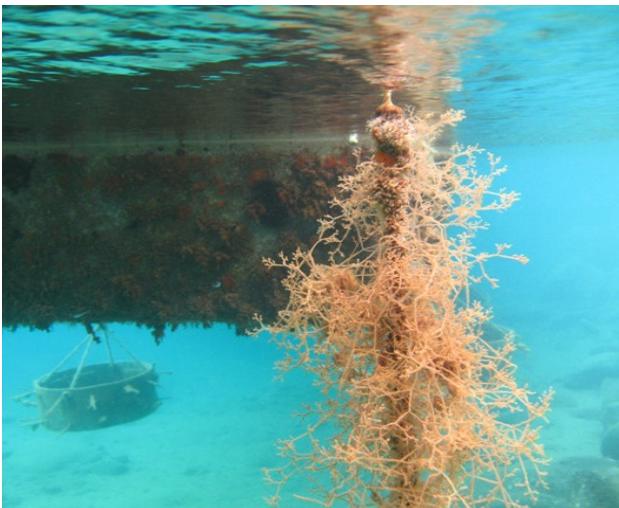


Bryozoa (branching) - *Amathia verticillatum* (Zoobotryon)

DESCRIPTION	upright bryozoan, with limp, cellophane noodle like branches
RANGE	First described from the Gulf of Naples, Italy in 1822. In the southeastern US and on the west coast from San Diego to San Francisco Bay, California. Possibly native to the Caribbean, it is now invasive worldwide.
SIZE	Zooids in single rows on long, wide, branches; grows up to 1 meter length
STATUS	Invasive
COLOR	clear to opaque
HABITAT	A warm water species, it is often found on docks and man made structures, but also grows on hard natural substrate such as mangroves
TIDAL HEIGHT	subtidal
SALINITY	15-35 ppt, optimum between 20-30°C
TEMPERATURE	10 - 35°C with large colonies forming over 22°C
SIMILAR SPECIES	Recently revised to be a member of the genus <i>Amathia</i> , the species can be distinguished from others in this genus by it's longer, wider, spaghetti-like branches that can reach up to a meter in length and the linear arrangements of the zooids.



© Linda McCann



© Linda McCann

©Joao Canning-Clode