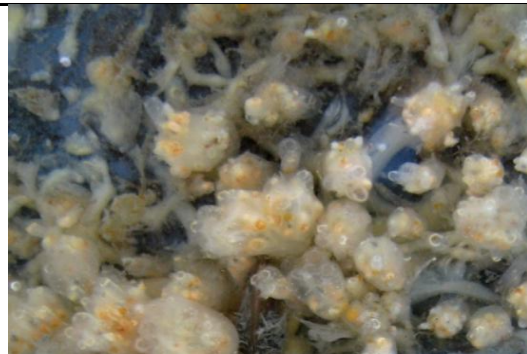


Tunicate (colonial) - *Distaplia alaskensis*

DESCRIPTION	Colonies consist of several cone-shaped lobes generally narrowing from the top to the base with a small area of attachment. The lobes are elongated and flat-topped. Lateral offshoots can sometimes cover settling plate surface without many lobes attached.
RANGE	This species was undescribed until 2001 and was only found on manmade structures in Homer Harbor and Cordova Marina.
SIZE	Colonies up to 5 cm in length always subdivided into numerous lobes < 3 cm in diameter.
STATUS	Unknown origin
COLOR	Orange, peach or yellow to tan. Translucent, shiny tunic.
HABITAT	Preferred habitat is sheltered surfaces, rocks and crevices. In shallow water, but never exposed at low tide. Situated away from very much light. Found on harbor pilings, ropes and settling plates. Overgrows molgulas, mussels and has been seen on decorator crabs.
TIDAL HEIGHT	Shallow sub tidal.
SALINITY	15.2 to 33.3 ppt. (Homer & Seldovia Harbor range)
TEMPERATURE	-2.3 to 14.9 °C (Homer and Seldovia Harbor range)
SIMILAR SPECIES	<i>Distaplia occidentalis</i> is often purple or pinkish and is much shorter and mushroom-like in growth form. The latter species is also often larger, ranging to many centimeters and feels firmer to the touch.



All photos ©ADF&G - KBRR