

Tunicate (solitary) - *Corella inflata*

DESCRIPTION	This solitary tunicate has an oblong-oval body, with a bumpy surface. Its atrial chamber is greatly enlarged into a brood chamber, giving it a roughly cubical outline. The tunic is translucent and it has poorly developed siphons.
RANGE	Common throughout Alaska. Found to the San Juan Islands, Washington. It has recently extended its range south to San Francisco, Ca., probably due to boat fouling
SIZE	To 5 cm high.
STATUS	Native
COLOR	Clear and colorless, often with flecks of white, gold or orange.
HABITAT	On rocks and floats and other man-made structure.
TIDAL HEIGHT	Low intertidal zone to sub tidal depths of 20 m.
SALINITY	Minimum 27 ppt
TEMPERATURE	-2.3 to 14.9 °C (Homer and Seldovia Harbor range)
SIMILAR SPECIES	<i>Ciona intestinalis</i> is several times taller than wide and has visible longitudinal muscle bands. <i>Corella willmeriana</i> is very similar to this species but has a rectum more than 3/4 the length of the body and its atrial siphon is not expanded into a brood chamber (bottom photo).
MORE FACTS	This tunicate is more than 99 percent water, yet it is preyed upon by several animals, including the morning sun star.

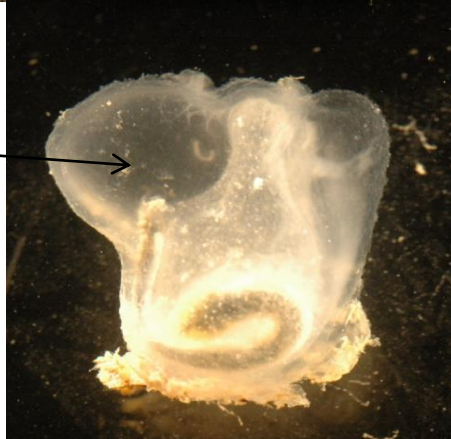


©G. Lambert



©Chela Zabin

brood chamber



©Melissa Frey