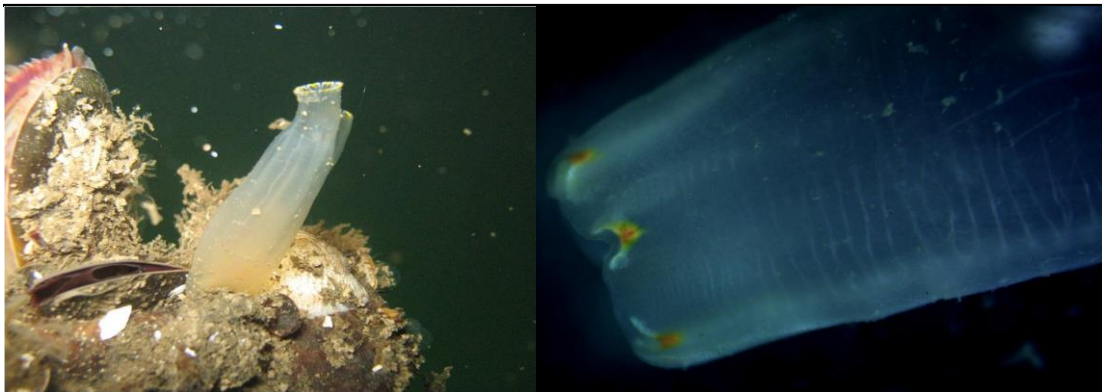


Tunicate (Solitary) - *Ciona savignyi*

DESCRIPTION	This solitary tunicate is long and transparent with orange dots and broad yellow markings on the scalloped edges of the siphons. The body is fragile and easily torn. They can form large groups.
RANGE	Puget Sound, Washington to southern California. They are native to Japan and were first reported in the lower 48 in 1985 in Long Beach, California. First possible record in Alaska in Loring in 1903.
SIZE	Body long, up to 15 cm.
STATUS	Invasive. See the full record at http://invasions.si.edu/nemesis/
COLOR	Pale yellow, often transparent with white and yellow dots in body cavity. The tip of vas deferens is white.
HABITAT	Often found on docks and manmade structures such as boat hulls. They can form dense aggregates.
TIDAL HEIGHT	Subtidal to 60m.
SALINITY	18-35 ppt
TEMPERATURE	Broad temperature range, 11-27°C
SIMILAR SPECIES	In California <i>Ciona robusta</i> (formerly <i>intestinalis</i>) is distinguished by its red/orange dots on the siphon edges (<i>C savignyi</i> has bright yellow streaking on the siphon edges as in photo below), and the red dot on the vas deferens seen through the body wall. The tunic also gets tougher and browner in <i>C. robusta</i> . Genetic analyses is showing that these patterns may be regional, making the taxonomy difficult.



© Janna Nichols

Tip of siphon showing bright yellow lines ©M. Frey



©Melissa Frey

©California Academy of Science