

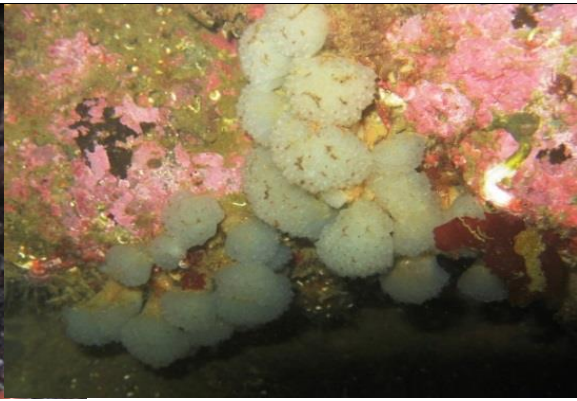
NATIVE TUNICATES

Tunicate (colonial) - *Aplidium* sp.

DESCRIPTION	Tunicate white or grayish. Attachment narrower than body with zooids organized at top. Zooids have 3 body regions.
RANGE	Unknown. Common in Kachemak Bay, Alaska
SIZE	Up to 3 cm in diameter and/or height
STATUS	Native
COLOR	Yellowish white or grayish
HABITAT	Hard substrates. Rocky overhangs.
TIDAL HEIGHT	Intertidal down to unknown depth
SALINITY	15.2 to 33.3 ppt. (Homer & Seldovia harbor range)
TEMPERATURE	neg 2.3 to 14.9° C (Homer & Seldovia harbor range)
SIMILAR SPECIES	This species has been looked at by ascidian expert Gretchen Lambert. Examination of well relaxed specimen lead to <i>Aplidium coei</i> but it is not that species. For now it is an unknown <i>Aplidium</i> .



©KBRR-C.Bursch



©K.Iken



©KBRR-C.Bursch



©KBRR-C.Bursch