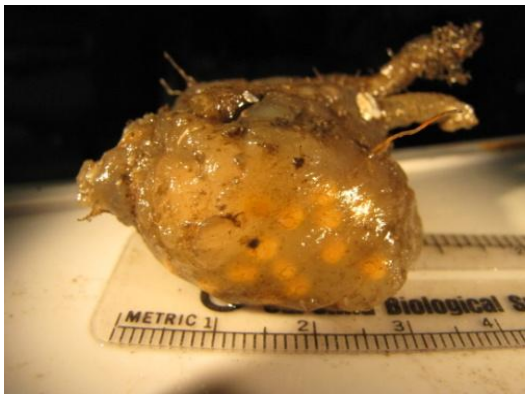


NATIVE TUNICATES

Tunicate (colonial) - *Aplidium californicum*

DESCRIPTION	This colonial tunicate, commonly called Sea Pork, is very smooth, round and often glossy. Sometimes sand is in folds of the tunic, but never embedded. Form is extremely variable including mounds, lobes or sheets.
RANGE	Alaska to southern California
SIZE	1- 3 cm tall, to 20 cm in diameter.
STATUS	Native
COLOR	Variable, white, pink, peach or brown with yellow to orange spots within the tunic, to nearly colorless.
HABITAT	Intertidal to subtidal, rocks, sand and common on man-made substrates to 85 m.
TIDAL HEIGHT	Lower intertidal, subtidal to 85 m.
SALINITY	25.4 to 35 ppt
TEMPERATURE	-0.4 to 16.2 °C
SIMILAR SPECIES	Glossy surface distinctive. Species is highly variable in form and can look similar to <i>A. solidum</i> , but the latter is generally much larger and has 5 lobes on the atrial siphon, whereas <i>A. californicum</i> has none.



©P. Norwood Sitka



©SERC San Diego